

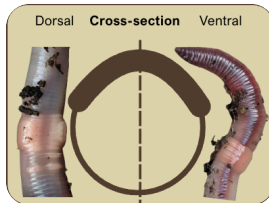
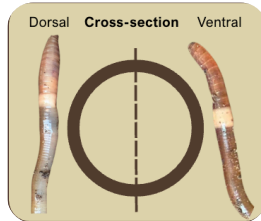
Field Guide to Common NE Earthworm Identification

Smooth, rigid texture and a dark grey or brown body with an iridescent, metallic sheen.

Only adult worms can be reliably identified. Juveniles lack key features.

Check the Clitellum
(The thick band on the worm's body)

Clitellum is ANNULAR (encircles body), SMOOTH, FLAT, and GREY-WHITE or MILKY



Clitellum is SADDLE-SHAPED (top/side only), RAISED

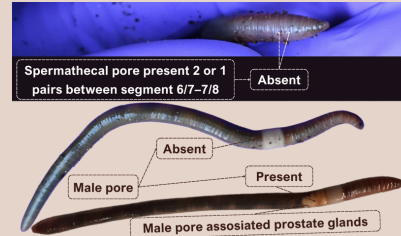
Traits such as pore number and markings may vary or be difficult to observe, so consider identifications approximate.

Move to the next step to look at the worm's color and head/tail shape.

Amyntas tokioensis

7.5–12.5 cm (3–5").

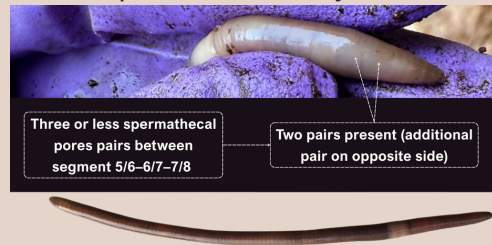
If present 1 or 2 pairs of spermathecal pores. Male pores are on segment 18 or absent.



Amyntas agrestis

7–16 cm (2.8–6.3").

3 or less pairs of spermathecal pores. Genital markings are often absent or faint. Male pores are usually absent.



Metaphire hilgendorfi

10.9–17 cm (4.3–6.7").

2 pairs of spermathecal pores. Genital markings along the midline.



Stripy Body (compost worms)

Eisenia fetida (Tiger Worm)



3.5–13 cm (1.5–5"). Distinct red and yellow banding with a yellowish tail tip.

Eisenia andrei (Red Tiger)



2–11 cm (0.8–4.3"). Uniform dark red. Stripes are very faint or not visible, and it lacks a yellow or pale tail.

Greenish Body (wet soils gardens, riverbanks, clay soils).

Allolobophora chlorotica (Green Worm)

4–7 cm (1.6–2.8"). Green (most common) or pale pink body. Three pairs of small sucker-like discs on the underside of the clitellum.

Three pairs of sucker-like discs underside the clitellum



Pale Head & Yellowish Tail Whitish, pink, or grey head (moist soil, under stones, logs, or near streams)

***Octolasion cyaneum* (Woodland Blue Worm)**

Large, 6.5–18 cm (2.6–7"). Blue-grey body with a light-yellow tail.



***Octolasion tyrtaeum* (Woodland White Worm)**

Smaller, 2.5–13 cm (2.6–7"). Pale whitish or grey-pink body lacking dark pigmentation. Reddish-orange or bright beige clitellum. Light-yellow tail.



Dark / Deep dark red, purplish-red, or chestnut brown head.

A: Male Pores are VISIBLE and LARGE body size

***Aporrectodea longa* (Black-headed Worm)**

10–17 cm (4–6.7"). Two-tone color (dark grey head and pale brown/grey body) with an narrower,



sometimes flattened tail. Found in deep burrows.

***Lumbricus terrestris* (Lob worm, Nightcrawler)**

Thick, pencil-sized 9–30 cm (3.5–12"). Head to tail dark-to-pale gradient. Flattened, paddle-like tail. In deep burrows.



B: Male Pores are VISIBLE and SMALL (Small worms)

***Dendrobaena octaedra* (Octagonal-tail Worm)**



2–4 cm (0.8–1.6"). Distinctive octagonal (angular) or quadrangular tail shape.

***Dendrodrilus rubidus* (Gilt-tail Worm)**



2–10 cm (0.8–4"). Yellow or orange pigmented tail.

C: Male Pores are NOT VISIBLE (surface-dwelling worms found in litter, compost, and under logs)

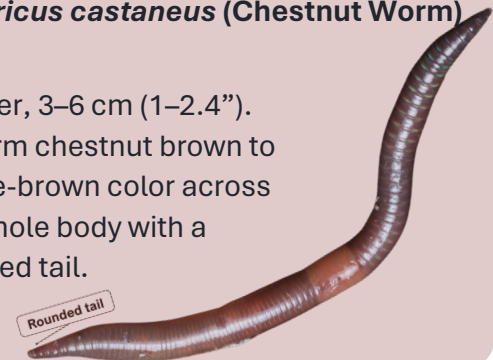
***Lumbricus rubellus* (Red earthworm, Red wriggler)**

2.5–15 cm (1–6"). Red head that clearly fades toward a lighter tail. Tail slightly flattened.



***Lumbricus castaneus* (Chestnut Worm)**

Smaller, 3–6 cm (1–2.4"). Uniform chestnut brown to purple-brown color across the whole body with a rounded tail.



Maryam Nouri-Aiin
Maryam.nouri-aiin@uvm.edu
Funded by SARE (LNE25-489)

Scan for full interactive key & photo reference

